



INDOFINE Chemical Company, Inc.

121 Stryker Lane, Bldg. 30, Suite 1 • Hillsborough, NJ 08844 • U.S.A.

Phone: (908) 359-6778 • FAX: (908) 359-1179

website: www.indofinechemical.com

e-mail: chemical@indofinechemical.com

CERTIFICATE OF ANALYSIS

Catalog Number: **22-309**

Product Name: **3,6,3',4'-TETRAMETHOXYFLAVONE**

Lot Number: 99198

Chemical Formula: C₁₉H₁₈O₆

Molecular Weight: 342.35

Melting Point: 160-161°C

Appearance: Pale yellow powder

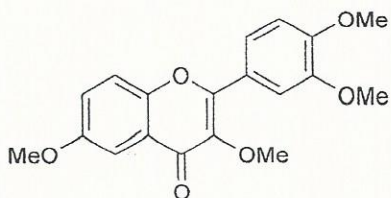
Solubility: Soluble in chloroform

TLC: n-Hexane : Ethyl acetate (1:1)

NMR Spectrum: Enclosed (Conforms to the structure)

Storage: Store in a cool, dry place

Purity (HPLC): 99%





INDOFINE Chemical Company, Inc.

121 Stryker Lane, Bldg. 30, Suite 1 • Hillsborough, NJ 08844 • U.S.A.

Phone: (908) 359-6778 • FAX: (908) 359-1179

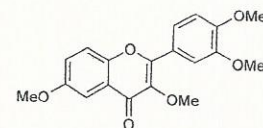
website: www.indofinechemical.com

e-mail: chemical@indofinechemical.com

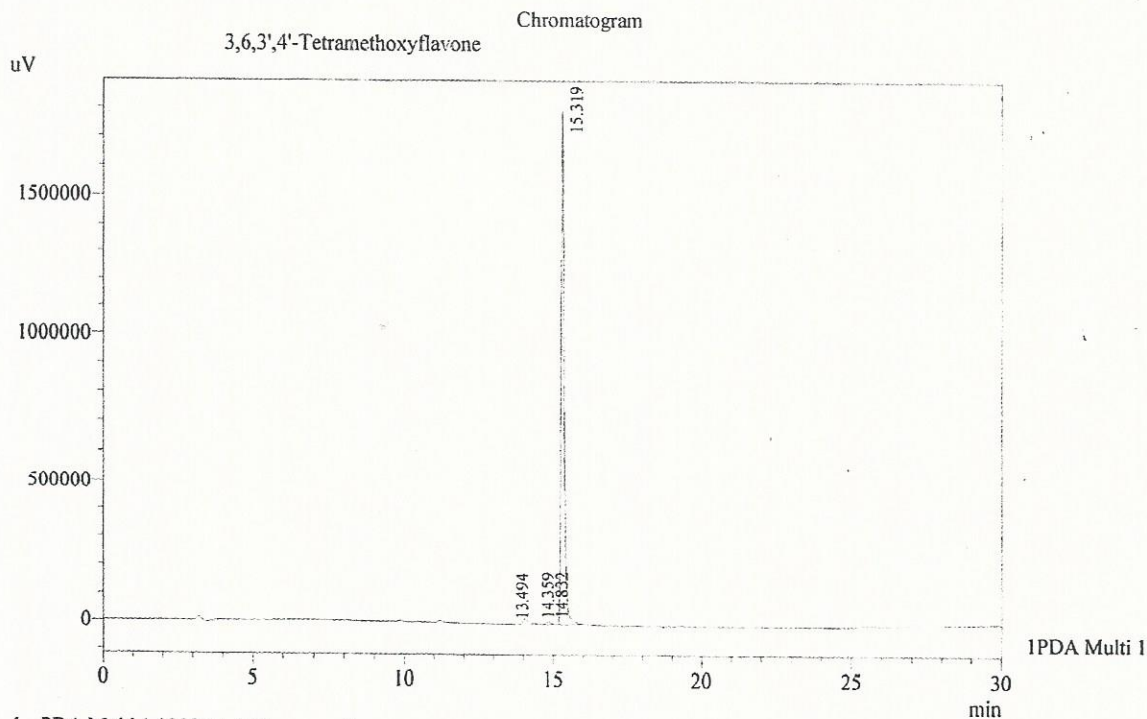
HPLC ANALYSIS

Acquired by : Admin
Sample Name : 3,6,3',4'-Tetramethoxyflavone
Sample ID : Lot no: 99198
Injection Volume : 20 uL
Data Filename : 120615L.lcd
Method Filename : Linear Gradient.M.lcm

Catalog No.: 22-309
Product Name: 3,6,3',4'-Tetramethoxyflavone
Lot No.: 99198



Column : LUNA C-18, (250mm x4.6mm 5.0μ)
Flow : 1.000 mL/min.
Mobile Phase : A(0.05% TFA in Water) B(Acetonitrile)
0.01 90 10
12.0 10 90
20.0 10 90
23.0 90 10
30.0 90 10
Diluent : Acetonitrile



1 PDA Multi 1 / 230nm 4nm

PeakTable

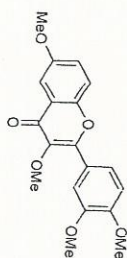
PDA Ch1 230nm 4nm

Peak#	Name	Ret. Time	Area	Area %	Relative Retention Time
1	RT:13.494	13.494	15366	0.12	0.88
2	RT:14.359	14.359	26870	0.21	0.94
3	RT:14.832	14.832	82072	0.65	0.97
4	3,6,3',4'-TetraOMe flavone	15.319	12490847	99.01	1.00
Total			12615155	100.00	



INDOFINE Chemical Company, Inc.
121 STRYKER LANE
BLDG. 30, SUITE 1
HILLSBOROUGH, NJ 08844

Catalog No.: 22-309
Product Name: 3,6,3',4'-Tetramethoxyflavone
Lot No.: 99198



1H IN CDCL3
SOLVENT CDCL3
NS 8
NU 11094.673 Hz
P1 0.36987 Hz
FIDRES 1.3519598 sec
AQ 25.4
RG 45.067 usac
DW 6.00 usac
DE 238.2 K
TE 1.50000000 sec
D1 1
TD0

***** CHANNEL f1 *****
NUC1 1H
P1 7.50 usac
-P1.1 2.50 dB
PL1W 6.62584448 W
SF01 600.3319250 MHz
SF 600.3300114 MHz
WDW EM
SSB 0
LSB 0.30 Hz
GB 0
PC 1.00

